

# What is a pesticide?

You might know them as:

- Insect repellents
- Disinfectants
- Fungicides/mold control
- Weed & feed
- Ant & mouse baits
- Insect sprays

Pesticides kill, control, or repel pests. By pest, we mean unwanted or harmful insects, germs, plant diseases, weeds, and animals.



## Is it safe?

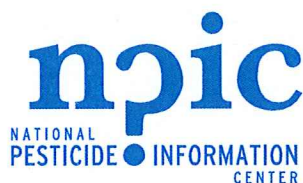
All pesticides have the potential to cause harm, even natural and organic ones. You'll have to decide what's best for your situation by balancing the risks and benefits. Finding ways to reduce risk is where we excel.

## We can help!



Our team answers questions about:

- Risk to people, animals, & the environment
- Upcoming pesticide treatments
- Pest control
- Gardening & food safety
- Using insect repellents
- Reporting pesticide incidents
- Pregnancy & pesticides



**800.858.7378**

8am - 12pm PT, Mon-Fri

f @NPICatOSU

# Protect Your Health Read the Label



MOSQUITO REPELLENT



KEEP OUT OF REACH OF CHILDREN  
**WARNING:** Read cautions on back.

Active Ingredient:  
DEET.....7.0%  
Other Ingredients.....93.0%

NET 7.5 FL OZ (222 mL)

## SIGNAL WORDS



How toxic is the product?

**Caution** = mildly toxic  
**Warning** = moderately toxic  
**Danger** = highly toxic

## Top three pesticide safety tips:

- 1) Read the entire label
- 2) Only apply where the label says it should be applied
- 3) Keep all pesticides in their original containers

## ACTIVE INGREDIENTS



What is in the product?

## STORAGE & DISPOSAL



How does this product have to be stored? What should I do with the leftovers I don't need?

## EPA REGISTRATION NUMBER



What is the unique product number showing that the EPA has approved it?

**npic**  
NATIONAL PESTICIDE INFORMATION CENTER  
1.800.858.7378

For general questions about pesticides, including the potential risk to humans, pets, or the environment, call NPIC at 1-800-858-7378.

Repels Mosquitoes, Ticks,  
Biting Flies, Gnats, No-see-ums, Chiggers & Fleas

STOP: Read and Follow all directions and precautions on this product label.

## DIRECTIONS FOR USE

It is a violation of Federal law to use this product in a manner inconsistent with its labeling.

**NOTICE:** To the extent consistent with applicable law, buyer assumes all responsibility for safety and use not in accordance with directions.

## STORAGE AND DISPOSAL

**Storage:** Store in a cool, dry place, out of reach of children.

**Container Disposal:** If empty:

If partly filled:

## PRECAUTIONARY STATEMENTS

Hazards to Humans and Domestic Animals.

**First Aid. If in Eyes:**

**If Swallowed:** Call a Poison Control Center or doctor immediately for treatment advice. Do not induce vomiting unless told to do so by a Poison Control Center or doctor.

**IF YOU SUSPECT A REACTION TO THIS PRODUCT:** Discontinue use. Take off contaminated clothing. Rinse skin immediately with plenty of water for 15-20 minutes. Call a Poison Control Center or doctor for treatment advice.

**QUESTIONS:** For non-emergency information concerning this product, call the National Pesticide Information Center (NPIC) at 1-800-858-7378. For emergencies, call the Poison Control Center 1-800-222-1222. Have the product container or label with you when calling a Poison Control Center or doctor, or going for treatment.

EPA Reg. No. XXX-XX-XX

## DIRECTIONS FOR USE



How and where should I use the product? How much is okay?

**Not following the product's instructions is not only dangerous, but it is illegal!**

## PRECAUTIONARY STATEMENTS



How can the product be used safely?

## FIRST AID



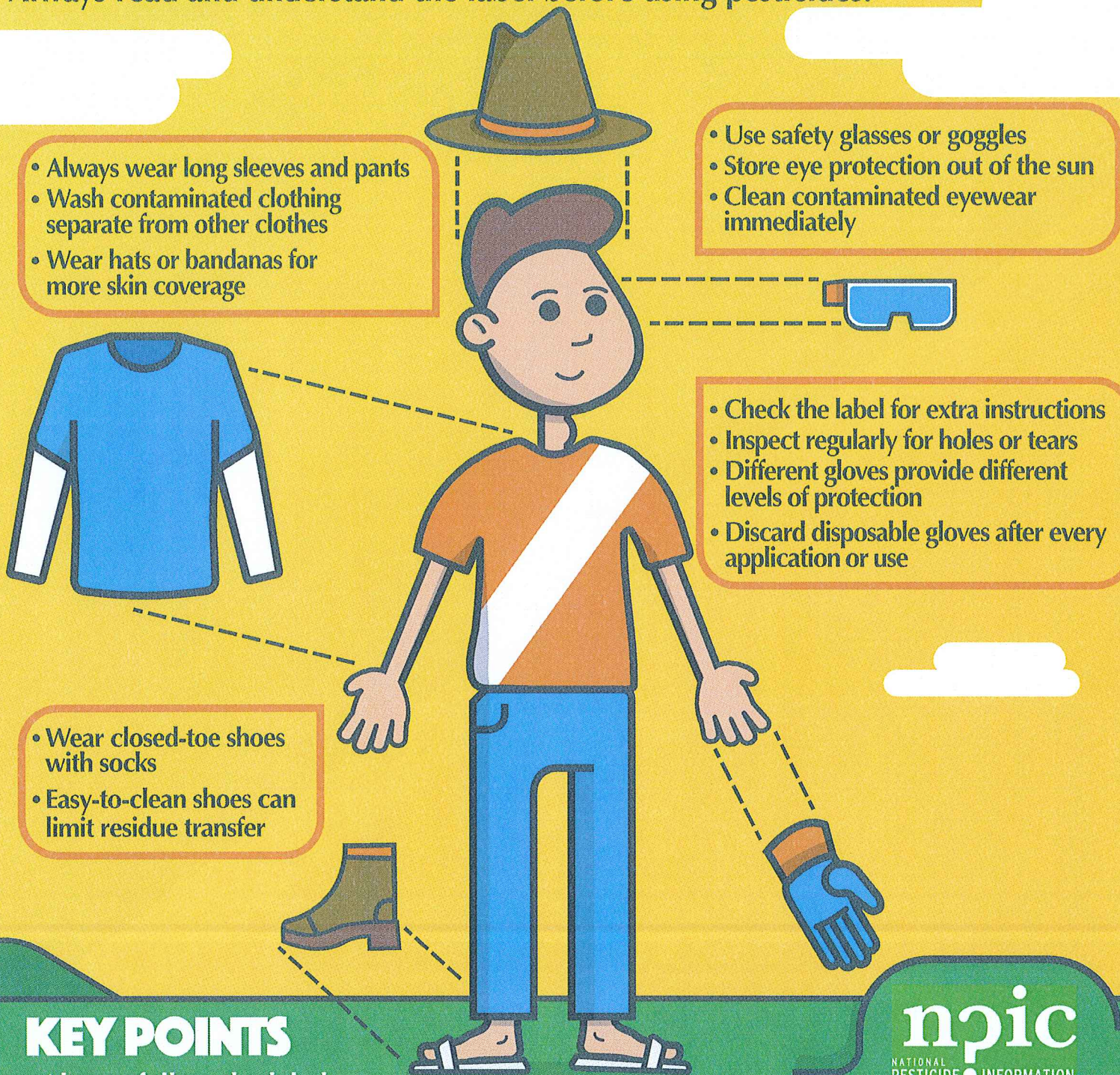
What should I do if it gets in my eyes, mouth, lungs, or on my skin?

**POISON Help**  
1-800-222-1222

If someone breathes in, swallows, or gets pesticide in the eyes or on the skin, call a poison control center 24/7 at 1-800-222-1222.

# AVOID PESTICIDE EXPOSURE WITH PROTECTIVE CLOTHING

Even a “natural” or low toxicity product can cause harm if a person is exposed to it. Minimize your risk by using personal protective equipment (PPE). Different products may need different PPE. Always read and understand the label before using pesticides.



- Always wear long sleeves and pants
- Wash contaminated clothing separate from other clothes
- Wear hats or bandanas for more skin coverage

- Use safety glasses or goggles
- Store eye protection out of the sun
- Clean contaminated eyewear immediately

- Check the label for extra instructions
- Inspect regularly for holes or tears
- Different gloves provide different levels of protection
- Discard disposable gloves after every application or use

- Wear closed-toe shoes with socks
- Easy-to-clean shoes can limit residue transfer

## KEY POINTS

- Always follow the label
- Do not store PPE with personal clothing
- Do not store PPE and chemicals together
- Wash protective clothing separately from other laundry

**npic**  
NATIONAL  
PESTICIDE • INFORMATION  
CENTER

Contact us: 800-858-7378  
8-12 PST M-F  
npic.orst.edu  
npic@ace.orst.edu