



JAY INDUSTRIES EYE SAFETY

April 2022

Eye Injury Facts

- Eye Injuries are almost always preventable
- It only takes a split second to injure your eye.
- An eye injury can last a life time.
- There are 2,000 work-related eye injuries every day in the U.S.A.
- Between 10% and 20% of eye injuries cause permanent vision damage.
- About 90% of eye injuries are preventable with the right PPE



**NEARLY THREE OUT OF FIVE WORKERS
REPORTING EYE INJURIES WERE NOT
WEARING EYE PROTECTION AT THE
TIME OF THE INJURY.**

What can hurt your eyes?

- **Welding dust**
- **Liquid chemicals**
- **Gases under pressure**
- **Nails**
- **Metal dust**
- **Solvent splashes**
- **Wire**
- **Glass**
- **Insulation**
- **Sparks**
- **Arc Flash**



When are you the most at risk?

- Overhead work
- Cutting
- Grinding
- Sanding
- Welding
- Drilling
- Using power tools
- Walking by a work area

**The ARCO
glasses that
saved my
eyesight. I am
so grateful.**



#weareye protection
#arco



Wear the right kind of eye protection and make sure it fits!

- Goggles
- Safety Glasses
- Safety Glasses with side shields or wrap arounds
- Welding helmet
- Face shield

- Make sure they fit
- Make sure they are clean
- Use prescription lenses if you need them
- Inspect them regularly
- Replace them when damaged

Which is best for you?



safety
glasses



safety
goggles

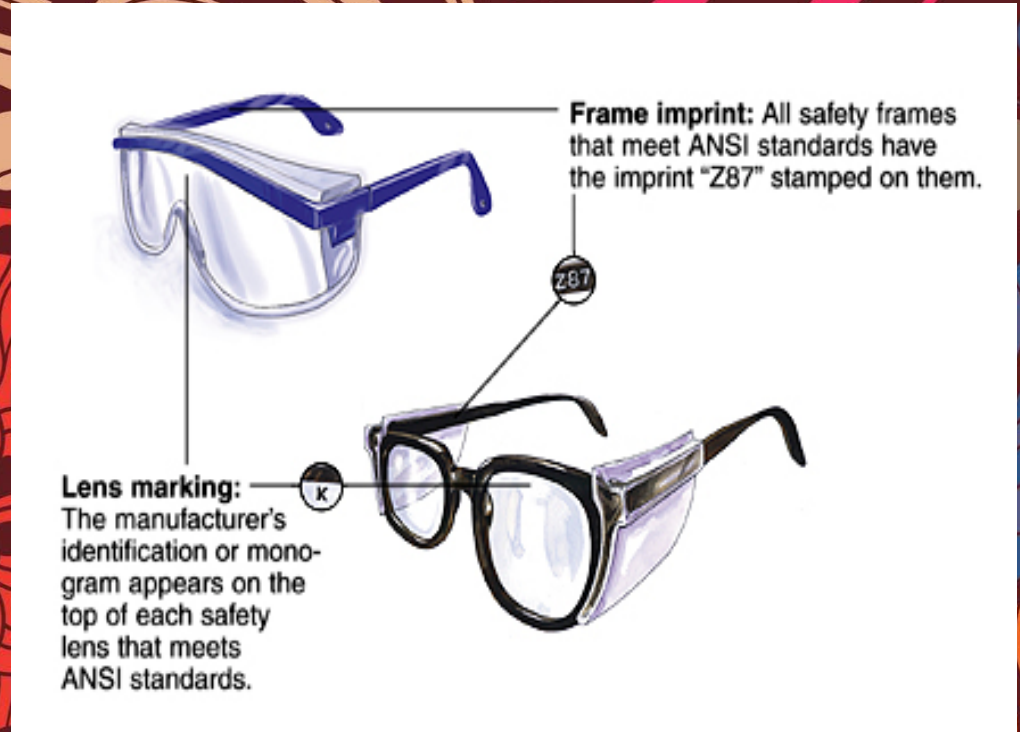
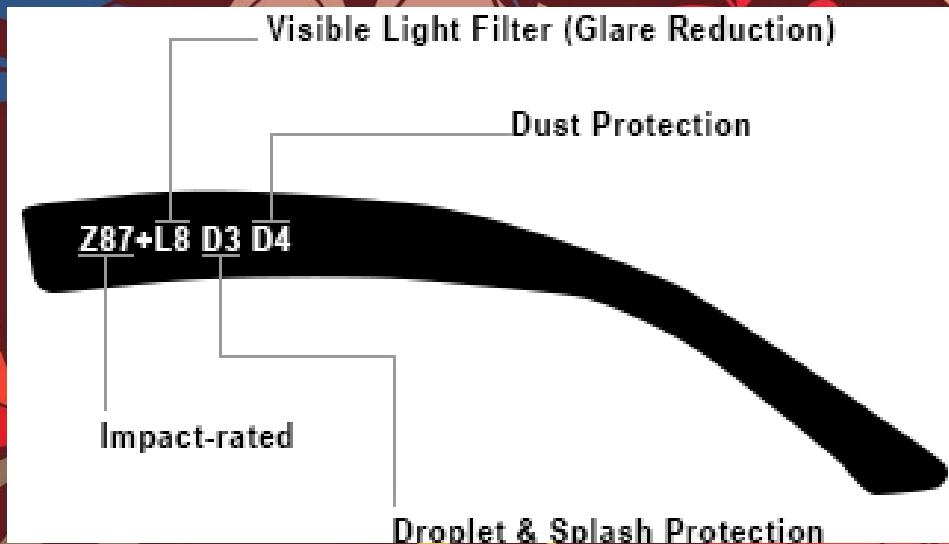


face
shield



welding
helmet

All Safety Glasses must be ANSI Z87 compliant, and are marked on the frame and lenses.



Ordinary glasses are NOT effective eye protection.

Not designed to protect from impact

Hazardous when shattered



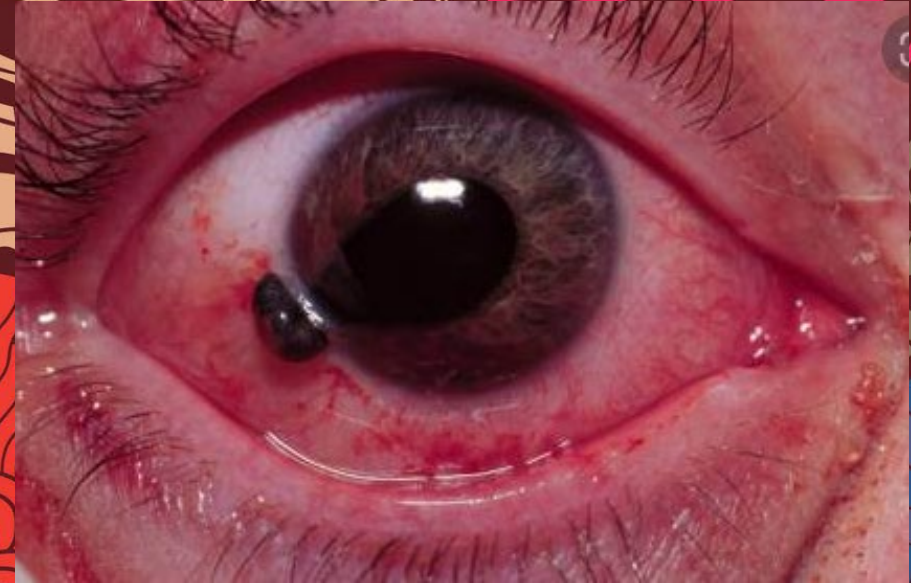
What hazards do Safety glasses protect?

- Protection against impact
- Tinted can be used to protect against optical radiation
- Can be used in torch soldering but must have a shade number of 1.5-3
- Cannot be used for gas or arc welding, which require a shade of 4 or higher



When do you need side protection or side shields on your Safety glasses?

- Use them when there are hazards from flying particles.
- Many newer styles have wrap around protection instead of side shields.
- Many eye injuries happen without adequate side protection or with poor fitting glasses.



When should you wear goggles?

- They are stronger than safety glasses
- Use for higher impact protection
- Use them for greater particle protection
- Necessary for handling chemicals and preventing splashes
- Can be used for welding light protection, with the proper shading
- Use them anytime there are hazards from flying particles.



Welding helmet vs. Welding goggles?

- Helmets are required for arc welding requiring shade numbers 10-14
- Helmets should always be worn over safety glasses or goggles
- Welding goggles can be used for gas welding or cutting with shade numbers 4-8



What about face shields?

- They provide more impact protection
- Cover the face as well as the eyes
- Should be worn over safety glasses or goggles



What if you get something in your eye?

- Don't rub it!
- Use eye wash bottles immediately
- Rinse with clean water for 15-20 minutes
- Ask the supervisor to look at your eye
- If there is a cut or puncture, don't wash or touch the eye or eyelid – get medical attention ASAP
- If an object is embedded, don't remove it. Gently pack gauze around it to stabilize it and head for the ER.



Are your eyes ready for work?

- Do you have safety glasses?
- Are you wearing them?
- Do they fit properly?
- Are they the right protection for the jobs you are doing?
- Where are the EYEWASH STATIONS in your work area?
- Do you know when to get medical attention?



Wear eye protection!

- You make the choice.
- Wear eye protection!

- You only have two eyes.
- Wear eye protection!

- Blindness is forever.
- Wear eye protection!

- Develop the habit.
- Wear eye protection!

If you work without safety glasses, you might not die, but you could lose an eye.

